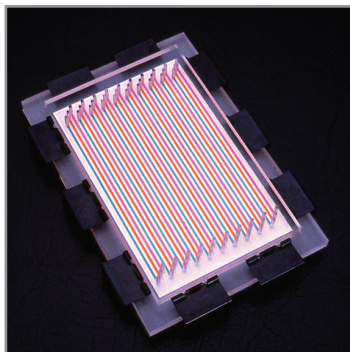


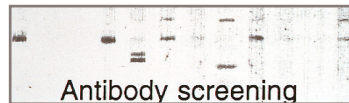
SURF BLOT

Eliminates Cutting Blots into Strips

Why cut your blot into strips? The **SURF-BLOT** can be used for any technique that formerly required cutting the blot into vertical strips. The **SURF-BLOT** clamps liquid channels tightly onto the surface of a blot. In a typical experiment, antigens are electrophoresed on a flat-topped gel and blotted. The blot is then clamped into the **SURF-BLOT** and antibody solutions are incubated in the liquid channels. After rinsing, the blot is removed from the **SURF-BLOT** and the blot visualization step is performed on the intact blot. Since there are no narrow strips to line up, the entire screening set can be compared on the intact blot. The **SURF-BLOT** is the only slot blot device that has



a convex stainless steel backing plate, and has been shown leak-free by the HIV testing lab of the Harvard School of Public Health (for data see www.ideascientific.com).



Use the **SURF-BLOT** to screen monoclonals¹ or polyclonals². Use the **SURF-BLOT** 10 or 10.5 for Grid-Blot screening^{3,4}. **SURF-BLOT** data in U.S. patent application 20120003225 figure 5 display sera autoantibodies that can be used to detect and treat cancer.⁵ Or use the **SURF-BLOT** to optimize your blot processing conditions by varying the amount and ratios of primary and secondary antibody.

1. Mukherjee, J., et. al., *Infection and Immunity*, Vol 70, pp. 612-619 (2002). Fig 1 shows monoclonal antibody screening (PMID: 11796590).
2. Piccoli, G. et al., *Journal of Physiology*, Vol. 543.2, pp. 481-494 (2002). Figure 3. (PMID: 12205183).
3. Lane, R.D., et. al., *Hybridoma*, Vol. 8, pp. 661-669 (1989). Grid-Blot screening does not require electrophoresis or blotting. (PMID: 2693340)
4. Reese, G. et. al., *Journal of Chromatography B*, Vol. 756, pp. 151-156 (2001). allergic patient screening uses ten times less antibody than ELISA sera screening. (PMID: 11419706)
5. www.faqs.org/patents/app/20120003225#b

CATALOG NUMBER	PRODUCT DESCRIPTION	BEST FOR	NUMBER OF CHANNELS	CHANNEL LENGTH	CHANNEL WIDTH	MAXIMUM BLOT WIDTH	SAMPLE VOLUME	PRICE U.S. \$
5006	SURF-BLOT 6	8 cm. tall minigels	30	6.0 cm.	1.5 mm.	8.9 cm.	60-90µl	240.00
5007	SURF-BLOT 7	8 or 10 cm. tall minigels	30	7.0 cm.	1.5 mm.	8.9 cm.	70-105µl	240.00
5009	SURF-BLOT 9	10 cm. minigels	30	8.9 cm.	1.5 mm.	8.9 cm.	90-135µl	240.00
5010	SURF-BLOT 10	Grid-Blot experiments	30	10.1 cm.	1.5 mm.	8.9 cm.	100-150µl	240.00
5013	SURF-BLOT 13	15 cm. tall gels	30	13.5 cm.	1.5 mm.	8.9 cm.	130-185µl	260.00
5055	SURF-BLOT 5.5	8 cm. tall minigels	21	5.5 cm.	2.5 mm.	9.3 cm.	100-140µl	240.00
5075	SURF-BLOT 7.5	8 or 10 cm. tall minigels	21	7.5 cm.	2.5 mm.	9.3 cm.	100-200µl	240.00
5085	SURF-BLOT 8.5	Criterion™ gels	33	8.5 cm.	2.5 mm.	14.7 cm.	100-220µl	240.00
5105	SURF-BLOT 10.5	Grid-Blot experiments	21	10.5 cm.	2.5 mm.	9.3 cm.	100-300µl	240.00
5135	SURF-BLOT 13.5	large format gels	33	13.5 cm.	2.5 mm.	14.7 cm.	100-350µl	290.00

Criterion is a registered trademark of BioRad Co.

This Power Supply

FREE



with select
GENIE blotters

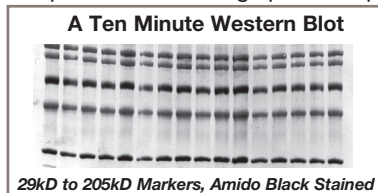
iDEA Scientific

Idea Scientific
Company
P.O. BOX 13210
MINNEAPOLIS, MN 55414

DREAM BLOTS IN MINUTES

GENIE

The **GENIE** is the proven electrophoretic transfer apparatus incorporating plate electrodes for the ultimate in field uniformity. Its design allows for close positioning of the electrodes which, when coupled with an inexpensive low-voltage power supply, creates a high field in volts/cm.

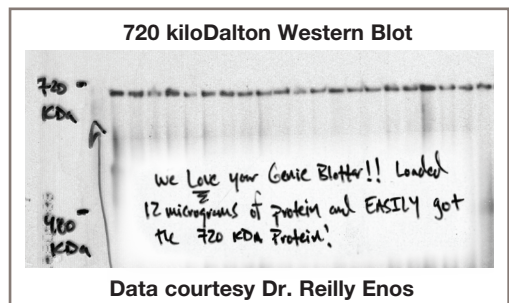


29kD to 205kD Markers, Amido Black Stained

The result is rapid and quantitative electrophoretic transfer. With the **GENIE** it is possible to obtain superb Western blots in 30 minutes at 24 volts.^{1,2,7}

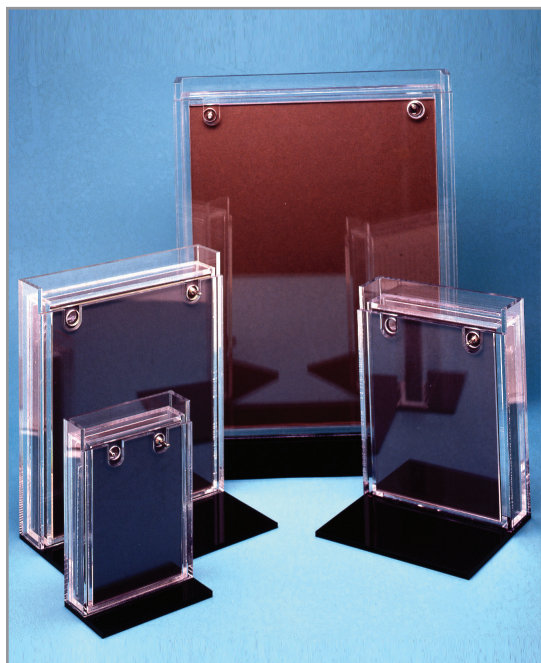
Size is not an issue, from micro RNA⁴ to 40 million Dalton mucin proteins,⁸ **GENIE** can blot any molecule. And, there is a **GENIE** sized for any experiment, from blotting a single minigel to blotting 30 minigels at once. A 1.5 hour Northern blot procedure was designed for the **GENIE**,³ and one-hour Southern blots are possible without the messy soaking of

gels in acid.^{5,6} Million bp DNA from CHEF gels can be blotted as an intact molecule.⁹ Scientists trust the **GENIE** for their most valuable samples-see next page.



Data courtesy Dr. Reilly Enos

the messy soaking of gels in acid.^{5,6} Million bp DNA from CHEF gels can be blotted as an intact molecule.⁹ Scientists trust the **GENIE** for their most valuable samples-see next page.



1. *Rapid High Resolution Western Blotting: From Gel to Image in a Single Day*, Klapper, A., et al., *Biotechniques*, 12, (1992), pp. 651-654.
2. Rickard, J.E., and Kreis, T.E., *J. Cell Biology*, 110, (1990), pp. 1623-1633.
3. *An Improved Rapid Northern Protocol*, Kevill, C.G., et al., *B.B.R.C.*, 238, (1997), pp. 277-279.
4. Bender, W. *Genes Dev* 22 (2008) pp. 14-19. (PMID 18172161)
5. Li, S., et al., *J. Exp. Med.*, 189, (1999) pp. 1399-1412.
6. Amemiya, C.T. and Zou, L.L., *Genomics* 58, (1999) pp. 211-213.
7. *EbolavirusVP35 suppresses IFN production from conventional but not plasmacytoid dendritic cells*. Leung, L.W. et al. *Immunol Cell Biol* 89 (2011) pp. 792-802 (PMID 21263462)
8. Dr. A. Livraghi-Butrico, personal communication.
9. Paul, A. et al. *The Plant Cell*, 10, (1998) pp 1349-1359.

ORDERING INFORMATION: The GENIE is offered in five sizes.

The economy alloy electrodes are adequate for occasional blotting. Units with platinized titanium anodes are more flexible and are recommended for all but the most casual of uses. Blotters include apparatus, two electrodes, pads, screens and instructions. Cables are not included but are included with some power supplies. Order power supplies below..

CATALOG#	PRODUCT DESCRIPTION	PRICE US\$
4003	Premium MINI-GENIE BLOTTER . Will blot gels up to 10 x 12 cm. Uses 300 ml buffer. Platinized titanium anode. Includes a #4924 power supply. BEST VALUE!	490.00
4002	Same as 4003 but with a FREE #4912 power supply.	450.00
4001	Economy MINI-GENIE . Has alloy anode and does not include a power supply.	Inquire
4004	Replacement alloy electrode for the MINI-GENIE . 10 x 15 cm.	70.00
4005	Platinized titanium anode for the MINI-GENIE .	210.00
4007	MINI-GENIE support pads. Pkg. of six. 10 x 12 cm.	15.00
4017	Premium GENIE BLOTTER . Will blot gels up to 15 x 17 cm. Uses 700 ml. buffer. Platinized titanium anode, and a FREE #4019 power supply. BEST VALUE!	790.00
4015	Economy GENIE . Has alloy anode and does not include a power supply.	Inquire
4010	Platinized titanium anode for the GENIE . 15 x 20 cm.	440.00
4011	Support pads for GENIE . Pkg. of six. 15 x 17 cm.	30.00
4014	Replacement alloy electrode for the GENIE .	110.00
4021	Premium ROYAL GENIE BLOTTER . Blots gels up to 20 x 21 cm. or six minigels. Uses 1.2 liters of buffer. Platinized titanium anode and a FREE #4019 power supply. BEST VALUE!	990.00
4020	Economy ROYAL GENIE . Has alloy anode and does not include a power supply.	590.00
4022	Replacement ROYAL GENIE support pads. Pkg. of six.	40.00
4023	Replacement ROYAL-GENIE alloy electrode. 20 x 24 cm.	155.00
4027	Platinized titanium anode for the ROYAL-GENIE .	620.00
4040	Complete JUMBO GENIE BLOTTER for blots up to 25 x 30 cm. Uses 2.2 liters of buffer. Two alloy electrodes.	690.00
4041	Same as 4040 but with platinized titanium anode.	1390.00
4042	JUMBO GENIE support pads. 25x 30 cm. Pkg. of 4	70.00
4043	Replacement Jumbo GENIE alloy electrode. 25 x 34 cm.	180.00
4044	Replacement Jumbo GENIE platinized titanium anode.	990.00
4046	GENIE MONSTER BLOTTER II Will blot gels up to 30 x 37 cm. Uses 3.5 liters of buffer.	790.00
4049	MONSTER support pads. Pkg. of four. 30 x 37 cm.	80.00
4051	MONSTER BLOTTER replacement alloy electrode.	240.00

GENIE POWER SUPPLIES

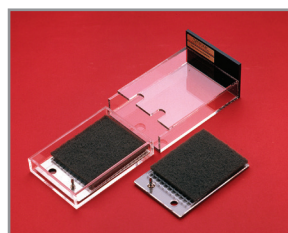
4019	0 to 19 volt, 0 to 2.2 amp, metered power supply for fast Western, Northern and Southern GENIE blots. (also works for semi-dry blotting) Order #1006 output cables below. 110/230 volt universal input. This power supply is FREE with some GENIE models, see above.	150.00
4912	Black box single 12 volt output for Westerns, Northern and Southern. Output cables permanently attached.	120.00
4924	Black box single, or variable 24 volt output for fast Westerns. Output cables permanently attached.	140.00



CONNECTING CABLES not needed if you have standard cables or if you order a power supply with attached cables.

1006	CONNECTING CABLES Pair of high quality cables	50.00
------	--	-------

BLOTTING LARGE PROTEINS? NO PROBLEM!



Horizontal semi-dry blotters and dry blotters trap electrode gasses in bubbles that disrupt the field. That is why the transfer of high molecular weight proteins is so poor with dry blotters. The **GENIE** is loaded horizontally but blotting is in the vertical position,

so bubbles rise away from the blotting area. Large proteins like the 565 kD ryanodine receptor¹⁰ and 427 kD Dystrophin¹¹ are blotted well. And the sharp banding of the **GENIE** allows resolution of 220 kD zonula occludens-1 isoforms¹² and 210 kD Rpb1 from phosphorylated Rpb1¹³.

10. Russ, D.W., et al., *Acta Physiol*, Vol. 201, pp 391-403 (2011) Figure 3. (PMID 20874807)
11. Welser, J.V., et al. *Am. J. Pathol.*, Vol. 175, pp1545-1554 (2009) Figure 4. (PMID: 19729483)
12. McCaffrey, G. et al., *J. Neurochem.*, Vol. 106, pp. 2395-2409 (2008) Figure 5. (PMID: 18647175)
13. Heine, G.F., et al., *J. Biol. Chem.*, Vol. 283, pp 9555-9561 (2008). Figures 1, 4, 5 and 6. (PMID: 18281289)

I have tried quite a number of electrophoretic transfer units over the last 15 years, including tank and semi-dry styles. ...my hands-down favorite unit is the Genie Blotter from Idea Scientific Company. ...I cannot think of any negatives for this piece of equipment. It is reasonably priced, easy to set-up and use, generates excellent blots of outstanding uniformity, and Idea Scientific offers great technical support. All-in-all, a very useful, solid laboratory tool.

MICHAEL CAMPA Ph.D.,
DUKE UNIVERSITY MEDICAL CENTER

Our lab currently owns three of the Royal Genie transfer apparatus and we could not live without them.

JAMES LEPARD, UNIVERSITY OF BRITISH COLUMBIA

Love your blotter.

SARAH VAN SCOY, SUNY STONY BROOK UNIVERSITY

Dear Idea Scientific,
I just purchased a Jumbo Genie blotter (plus power supply) and used it for the first time. I was amazed at the results. Perfect transfer, no background and a great signal. It is incredibly easy to set up and will save my lab hundreds of man hours a year. Congrats on an excellent product. I will be sure to reference your product in the many publications that will benefit from its use.

DR. MARK FARMAN, ASSOCIATE PROFESSOR,
UNIVERSITY OF KENTUCKY

I love your Genie blot system and have been using it for five years.

JOANNE KLIMAS, THOMAS JEFFERSON UNIVERSITY

We have four Genie blotters in the lab, and we all love them to death.

LAWRENCE LEUNG, MOUNT SINAI SCHOOL OF MEDICINE

We love the apparatus, by the way. It works MUCH better than our...

BECKY TU-SEKINE, JOHNS HOPKINS SCHOOL OF MEDICINE

I started using your stuff while at Oregon State University, and still use two of your Mini-Genies for all of our westerns! Several universities and companies later, I have found myself in need of some gel drying parts and was happy to see that I can still get drying frames from you guys. Just wanted to say hello again and let you know that the Genie outperforms every other blotter that I have tried.

DYLAN BULSECO Ph.D.,
BIOSENSOR GROUP, SENSOR TECHNOLOGIES

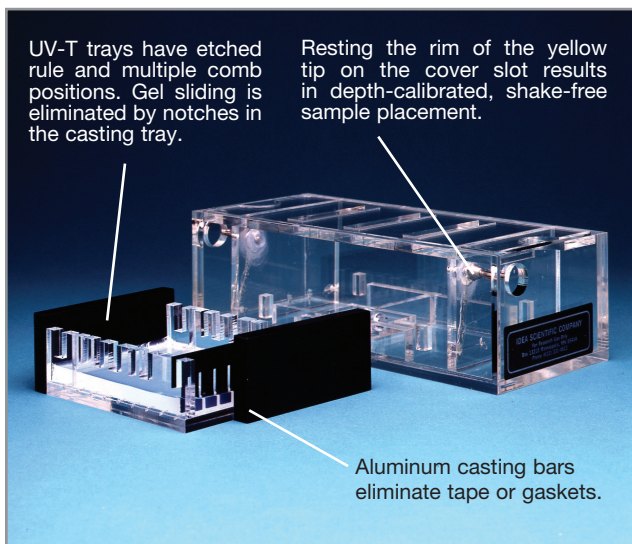
CHAMELEON

THE BEST SUBMARINE GELS

No wires to break. No gaskets to leak.

Our submarine gels have plate electrodes rather than the usual breakable wire ones. The UV-T gel trays have notches to keep gels from floating or sliding and a unique tape-free cold aluminum bar casting system. The vented cover functions as a stabilizer and allows easy loading through the cover. An internal port allows buffer recirculation.

The **MINI-CHAMELEON** has a centimeter ruler etched into the gel tray which casts a centimeter ruler into each gel. Or, users can make their own "puddle gels" on their 3-1/4" by 4" glass slides. The inclusion of three trays and six combs makes the **MINI-CHAMELEON** a great value. The **CHAMELEON** can accommodate up to five combs allowing electrophoresis of up to 120 samples per gel. Ideal for PCR samples. The **CHAMELEON** can be loaded from a 96 well plate with a 12 place pipettor.



CATALOG #	PRODUCT DESCRIPTION	PRICE US \$	CATALOG #	PRODUCT DESCRIPTION	PRICE US \$
6002	PREMIUM MINI-CHAMELEON SUBMARINE GEL Includes apparatus with plate electrodes, connecting cables, three trays, four casting bars, three 6008 combs and three 6009 combs.	Inquire	6011	PREMIUM CHAMELEON SUBMARINE GEL UNIT Includes apparatus with plate electrodes, connecting cables, one 11 by 15 cm. gel tray, two casting bars, and one 6014 flip-over 12 and 24 well comb.	350.00
6001	STANDARD MINI-CHAMELEON SUBMARINE GEL Same as 6002 but with platinum wire electrodes.	Inquire	6010	STANDARD CHAMELEON SUBMARINE GEL UNIT Same as 6011 but with platinum wire electrodes.	320.00
6004	7x10 cm gel tray. (Not UV-T, no ruler)	40.00	6014	Flip-over 12- and 24- well, multichannel compatible 1.9 mm comb	35.00
6008	8- well, 1mm thick comb (for Mini-Chameleon)	10.00	6015	Additional 11x15 cm gel tray, includes one casting bar.	45.00
6009	14- well, 1 mm thick comb (for Mini-Chameleon)	10.00			

TUT'S TOMB

GEL DRYING FRAMES

Preserve your data for future generations or future sequencing. Gels thinner than 1.5 mm are dried by placing on solid backing plate, covering with our inexpensive wet porous cellophane, then clamping a frame over the cellophane to

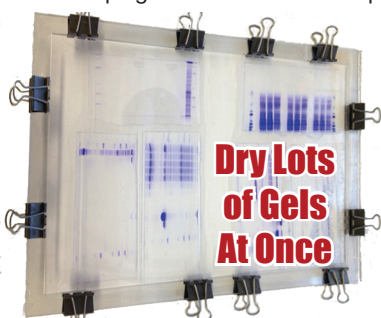


hold it flat. Order a frame larger than the gel(s) to be dried.

NEW USE FOR ANTIBIOTIC SCREENING

Cellophane is autoclavable and commonly used for surface growth of plants¹ mold spores and mushrooms. Cellophane allows small molecules, nutrients and antibiotics to pass through for screening.

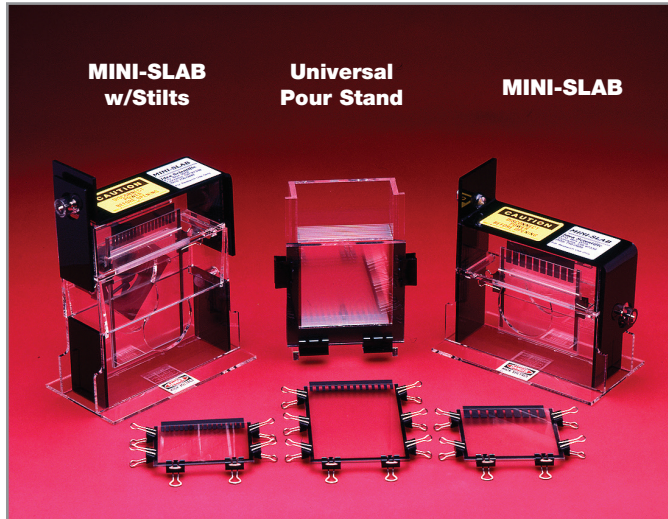
1. Clark et.al. Plant Mol. Biol. Nov. 74, pp. 423-435 (2010). PMID:20820881



CATALOG #	PRODUCT DESCRIPTION	CLIPS INCLUDED	PRICE US \$
1071	TUT'S TOMB for gels up to 8 by 10 cm.	4 clips	25.00
1072	TUT'S TOMB for gels up to 10 by 12 cm.	4 clips	30.00
1004	TUT'S TOMB for gels up to 13 by 15 cm.	6 clips	35.00
1074	TUT'S TOMB for gels up to 15.5 by 17.5 cm.	8 clips	40.00
1075	for gels up to 18.5 by 20 cm. or 4 minigels	8 clips	45.00
1076	for gels up to 22 by 24 cm or 6 minigels	8 clips	50.00
1077	TUT'S TOMB for gels up to 20x36 cm	8 clips	59.00
1078	TUT'S TOMB for gels up to 24x40 cm	8 clips	64.00
1079	TUT'S TOMB for gels to 24x72 cm	8 clips	120.00
1080	ULTRACLEAR ROLL CELLOPHANE or gel dryers or place over media for plant or fungi growth. 28 cm x 40 meter roll.		80.00
1081	ULTRACLEAR SHEET CELLOPHANE 26.5 x 32 cm., 125 sheets Each yields 6-1071, 4-1072, or 2-1004 sheets or use with 1074, 1075 or 1076.		60.00
1082	TUT'S TOMB for gels up to 36x44 cm, or 20 minigels		110.00
1090	ULTRACLEAR SHEET CELLOPHANE 40x48 cm. 100 sheets		99.00

MINI-SLAB... THE FIRST MINI-GEL

MINI-SLAB, the proven vertical mini-gel system, is operationally simple yet so comprehensive in application that it has been used for virtually every type of gel. With the capability of running 8-, 10- or 15-cm long gels, the versatile **MINI-SLAB** is in operation in thousands of laboratories worldwide. The **MINI-SLAB**, used principally for SDS-PAGE gels,¹ has also been used for non-denaturing² and acid-urea protein gels,³ nucleic acid and nucleo-protein agarose gels,⁴ restriction digests,⁵ monoclonal antibody screening gels, 2-D gels⁶ and PCR gels.

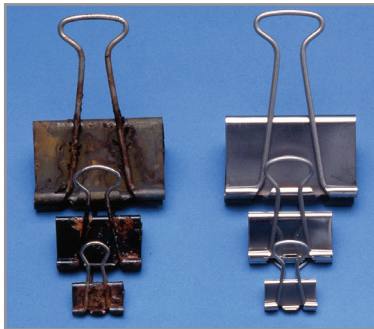


- Matsudaira, P.T. and Burgess D.R., *Anal. Biochem.* 87,386-396 (1978). : Howe, C.L. and Mooseker, M.S., *Journal of Cell Biology*, 97, 974-985 (1983). : Hendricks, M. and Weintraub, H., *Proc. Nat. Acad. Sci. USA*, 78, 5633-5637 (1981). : Williman, T. and Szent-Gyorgyi, A.G., *Biochemistry*, 20, 1176-1187 (1981).
- Francis, R.T. Jr. et al., *Journal of Chromatography*, 298, 115-121 (1984).
- Spiker, S., *Anal. Biochem.*, 108, 263-265 (1980). : Richards, R.G. and Shaw, B.R., *Anal. Biochem.*, 121, 69-82 (1982).
- Yager, T.D. and Van Holde, K.E., *Journal of Biological Chemistry*, 259, 4212-4222 (1984).
- Bailey, G.S. et al., *Biochemistry*, 19, 5836-5842 (1980).
- Davie, J.R., *Anal. Biochem.*, 120, 276-281 (1982). : Porter, S. and Froehner, S.C., *Journal of Biological Chemistry*, 258, 10034-10040 (1983).

CATALOG #	PRODUCT DESCRIPTION	PRICE US \$
1001X	COMPLETE MINI-SLAB SYSTEM. Includes MINI-SLAB, six combs (one each of the first six combs listed), 0.5 and 0.8 mm thick spacer material, eight 10x10 cm glass plates and instructions.	295.00
2008	COOLING FAN FOR THE MINI-SLAB. Allows a 3x power increase. 110 volt input.	110.00
1018	UNIVERSAL GRADIENT GEL POURING STAND. Allows one to pour up to 10 gradient or single concentration gels that are 8-, 10-, or 15-cm long. Includes 0.5 and 0.8mm thick spacer material and instructions. Order glass and combs separately.	140.00
1003	MULTIPLE GEL POUR STAND. Allows one to pour the separating gel of up to 15 single concentration gels simultaneously. For 8- or 10-cm long gels.	30.00
1004	GEL DRYING FRAME. Air dries gels without heat or vacuum. OTHER SIZES LISTED ELSEWHERE.	35.00
1006	CONNECTING CABLES. Pair of high quality cables	50.00
2001	STILTS PACKAGE. Everything needed to run 15 cm long gels on the MINI-SLAB. Includes twelve 10x15 cm glass plates, one STILTS adapter, and spacer material for 0.5 and 0.8 mm thick gels. #2008 fan can be mounted in STILTS.	80.00
2002	STILTS GLASS PLATES. Package of 12 10x15 cm quality ground edge glass plates.	75.00
1017	10x10 cm GLASS PLATES. Package of 12 quality ground edge glass plates.	70.00
V-6	SEXTUPLETS. A six gel apparatus which can be used for the second dimension of 2-D gels. Includes: apparatus, twelve 10x10 cm glass plates, 1.0 and 1.5 mm thick spacers and instructions.	400.00
7210	GEL LOADING PIPET TIPS. Load gels as thin as 0.65 mm. Five racks of 200 per rack.	70.00
COMB AND SPACER SETS. All sets contain two combs and six 20-cm long, 4.0 mm wide spacers that can be cut to length for any size gel. Combs with ten wells have 6x16 mm wells, 14 and 18 well combs have 3.5x10 mm wells. All combs and spacers are hand matched to the nearest 0.01 mm in thickness. Rigid combs are treated with a permanent non-stick coating. WE ARE THE ONLY SUPPLIER OF THESE NON-STICK COMBS IN THE WORLD!		
1005	0.5 mm thick, 18 wells, Teflon™.	20.00
1041	0.5 mm thick, 18 wells, Rigid, non-stick.	20.00
1035	0.5 mm thick, 10 wells, Rigid, non-stick.	20.00
1042	0.8 mm thick, 18 wells, Teflon™.	20.00
1008	0.8 mm thick, 18 wells, Rigid, non-stick.	20.00
1036	0.8 mm thick, 10 wells, Rigid, non-stick.	20.00
1009	0.8 mm thick, 14 wells, Rigid, non-stick.	20.00
1010	1.0 mm thick, 18 wells, Rigid, non-stick.	20.00
1011	1.0 mm thick, 14 wells, Rigid, non-stick.	20.00
1037	1.0 mm thick, 10 wells, Rigid, non-stick.	20.00

NO MORE RUSTY CLIPS!

For years, scientists have been plagued by corrosion of the usual office-style binder clamps used in electrophoresis. We now offer **FATHER TIME'S BINDERS**, a corrosion-free stainless steel binder that eliminates the rust stains and other problems associated with ordinary steel binders. Corrosion tested in acid! **FATHER TIME'S BINDERS** are the strongest stainless steel clips available, with many laboratory and industrial uses.



CATALOG #	PRODUCT DESCRIPTION	PRICE US \$
1062	SMALL 2 cm. wide, 7 mm opening. Pkg. of 12.	60.00
1064	MEDIUM 3 cm. wide, 12 mm opening. Pkg. of 12.	70.00
1066	LARGE 5 cm. wide, 2 cm opening. Pkg. of 12.	80.00

iDEA Scientific

TO ORDER:

ADDRESS: P.O. Box 13210, Minneapolis, MN 55414

PHONE: (612) 331-4612 **FAX:** (612) 331-4217

TOLL FREE: (800) 433-2535

Any instrument can be ordered with a 60 day free trial.

Visit our website, www.ideascientific.com,

Prices effective Nov. 1, 2023 Our 44th Year

Prices subject to change

Terms: 1% - 10 Days / Net 30, FOB, Minneapolis, MN



PayPal

To order by PayPal, give us your e-mail address and list of items. We will send a PayPal invoice to be paid by PayPal or credit card.